



ORAC



1

Skirting

From floor to wall, skirting defines the space in one fluid gesture. Whether delicately ornate or quietly refined, each design is thoughtfully crafted to complement the character of your project.

NL —

Van vloer tot wand: plinten geven elke ruimte een verfijnde afwerking. Subtiel of elegant gedetailleerd, elk ontwerp is zorgvuldig vormgegeven om het karakter van jouw project te versterken.

FR —

Du sol aux murs, la plinthe donne rythme et élégance à votre espace. Qu'elle affirme un style décoratif ou qu'elle se fonde avec finesse dans l'architecture, chaque ligne est conçue pour révéler toute la singularité de votre projet.

DE —

Vom Boden bis zur Wand definiert die Sockelleiste den Raum mit einer fließenden Geste. Ob dezent verziert oder schlicht und elegant – jedes Design ist mit Sorgfalt gestaltet, um den Charakter Ihres Projekts zu unterstreichen.

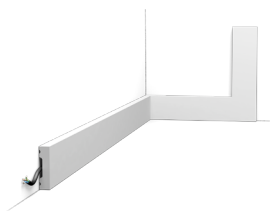
ES —

Del suelo a la pared, el rodapié da forma al espacio con un solo gesto fluido. Ya sea delicadamente ornamentado o sutilmente refinado, cada diseño está pensado para complementar el carácter de tu proyecto.

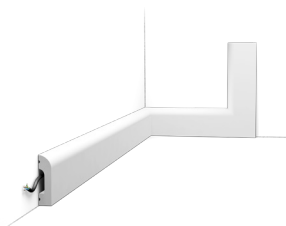
Skirting family overview

small

**SX162 | SX162F |
SX162-RAL9003 SQUARE**
Duropolymer®
200 x 4 x 1 cm



SX182 | SX182F CASCADE
Duropolymer®
200 x 5 x 1,3 cm

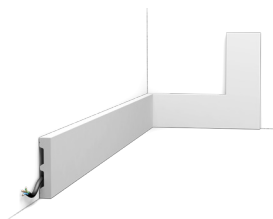


SX165 | SX165F CONTOUR
Duropolymer®
200 x 6,9 x 1,1 cm

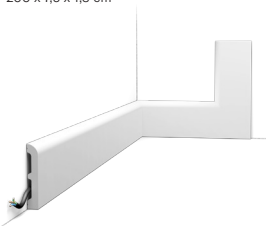


medium

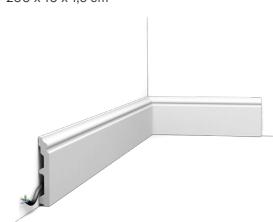
**SX157 | SX157F |
SX157-RAL9003 SQUARE**
Duropolymer®
200 x 6,5 x 1,3 cm



**SX183 | SX183F |
SX183-RAL9003 CASCADE**
Duropolymer®
200 x 7,5 x 1,3 cm



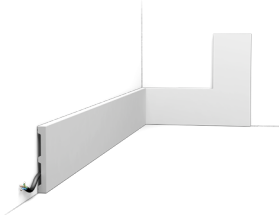
**SX173 | SX173F |
SX173-RAL9003 CONTOUR**
Duropolymer®
200 x 10 x 1,6 cm



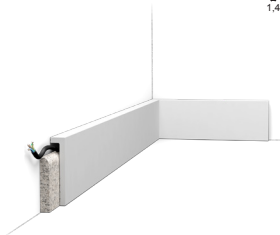
large

cover

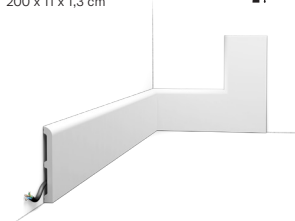
**SX163 | SX163F |
SX163-RAL9003 SQUARE**
Duropolymer®
200 x 10,1 x 1,3 cm



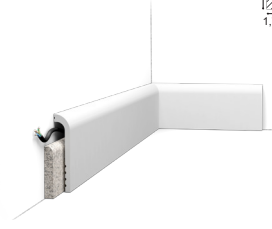
SX171 | SX171-RAL9003 SQUARE
Duropolymer®
200 x 10 x 2,2 cm



**SX184 | SX184F |
SX184-RAL9003 CASCADE**
Duropolymer®
200 x 11 x 1,3 cm



SX185 CASCADE
Duropolymer®
200 x 12 x 2,5 cm



**SX118 | SX118F |
SX118-RAL9003 CONTOUR**
Duropolymer®
200 x 13,9 x 1,8 cm



SX186 CONTOUR
Duropolymer®
200 x 13,8 x 2,2 cm



SQUARE

CASCADE

CONTOUR

Duropolym[®] is strength and style combined.

PAINTABLE



Primed and easy to finish with quality commercial paint.

NL — OVERSCHILDERBAAR

Voorgegrond en eenvoudig af te werken met kwaliteitsverf.

FR — PEUT ÊTRE PEINT

Pré-apprêté et simple à mettre en couleur avec une peinture de qualité, pour une finition impeccable.

DE — ÜBERSTREICHBAR

Grundiert und leicht mit hochwertiger handelsüblicher Farbe zu beschichten.

ES — PINTABLE

Imprimado y fácil de terminar con pintura de calidad.

FLEXIBLE



Many of our solutions are flexible. Designed to adapt to rounded corners with ease.

NL — VERKRIJGBAAR IN FLEX

Veel van onze oplossingen zijn flexibel en ontworpen om moeiteloos rondingen te volgen.

FR — DISPONIBLE EN VERSION FLEXIBLE

De nombreuses solutions sont disponibles en version flexible, offrant une adaptation parfaite aux angles arrondis et aux lignes courbes.

DE — AUCH ALS FLEXIBLE AUSFÜHRUNG ERHÄLTlich

Viele unserer Produkte sind flexibel und passen sich mühelos an runde Ecken an.

ES — DISPONIBLE EN VERSIÓN FLEXIBLE

Muchas de nuestras soluciones son flexibles y se adaptan con facilidad a esquinas curvas.

WATER RESISTANT



Engineered to use in damp spaces without swelling.

NL — WATERBESTENDIG

Geschikt voor vochtige, ruimtes zonder uit te zetten.

FR — RÉISTANT À L'EAU

Conçu pour les pièces humides sans risque de gonflement.

DE — WASSERFEST

Geeignet für Feuchträume – ohne Aufquellen.

ES — RESISTENTE AL AGUA

Diseñado para espacios húmedos sin riesgo de hinchazón.

IMPACT RESISTANT



Built to withstand knocks and scratches.

NL — STOOTVAST

Bestand tegen schokken en krassen.

FR — RÉISTANT AUX CHOCS

Conçu pour résister aux chocs et aux rayures du quotidien, tout en préservant son élégance dans le temps.

DE — STÖBFEST

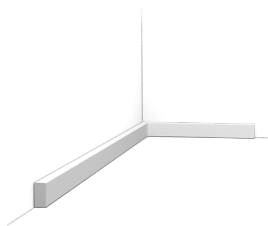
Robust gegen Stöße und Kratzer.

ES — RESISTENTE A IMPACTOS

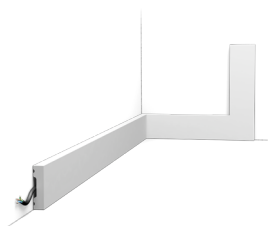
Preparado para soportar golpes y arañazos.

Square

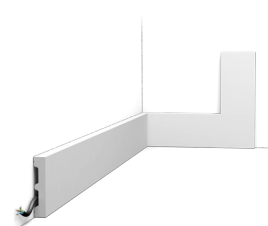
SX194 | SX194F SQUARE
Duropolymer®
200 x 2 x 1 cm



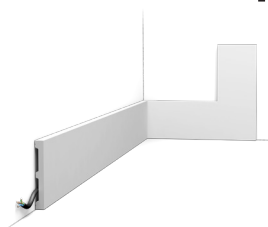
SX162 | SX162F SQUARE
Duropolymer®
200 x 4 x 1 cm



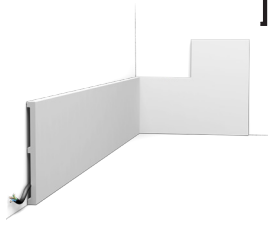
SX157 | SX157F SQUARE
Duropolymer®
200 x 6,5 x 1,3 cm



SX163 | SX163F SQUARE
Duropolymer®
200 x 10,1 x 1,3 cm



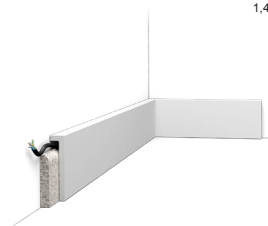
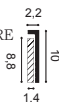
SX168 SQUARE
Duropolymer®
200 x 15 x 1,3 cm



SX207 | SX207F SQUARE
Duropolymer®
200 x 25 x 1,3 cm



SX171 | SX171-RAL9003 SQUARE
Duropolymer®
200 x 10 x 2,2 cm

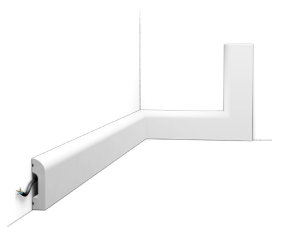




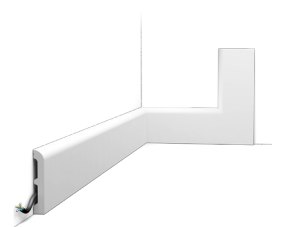
1. SX163 2. SX194

Cascade

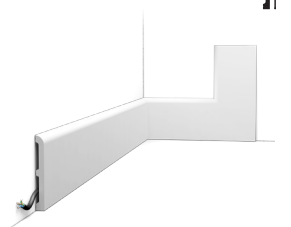
SX182 | SX182F CASCADE
Duropolymer®
200 x 5 x 1,3 cm



SX183 | SX183F CASCADE
Duropolymer®
200 x 7,5 x 1,3 cm



SX184 | SX184F CASCADE
Duropolymer®
200 x 11 x 1,3 cm



SX212 CASCADE
Duropolymer®
200 x 17 x 1,3 cm



SX185 CASCADE
Duropolymer®
200 x 12 x 2,5 cm





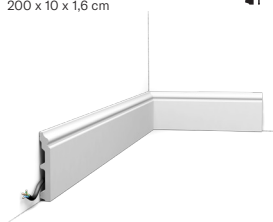
1. SX182 2. W217

Contour

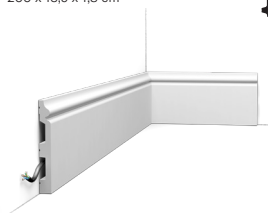
SX165 | SX165F CONTOUR
Duropolymer®
200 x 6,9 x 1,1 cm



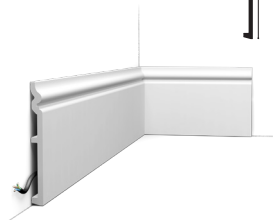
SX173 | SX173F | SX173-RAL9003 CONTOUR
Duropolymer®
200 x 10 x 1,6 cm



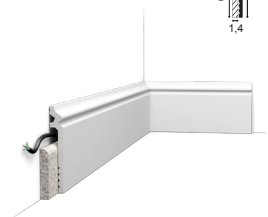
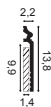
SX118 | SX118F | SX118-RAL9003 CONTOUR
Duropolymer®
200 x 13,9 x 1,8 cm



SX206 CONTOUR
Duropolymer®
200 x 18 x 1,8 cm



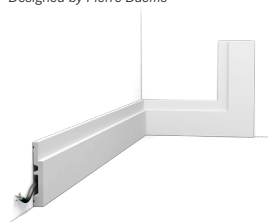
SX186 CONTOUR
Duropolymer®
200 x 13,8 x 2,2 cm





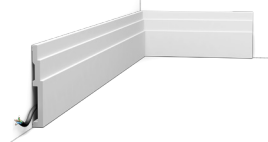
High line

SX187 | SX187F HIGH LINE
Duropolymer®
200 x 7,5 x 1,2 cm
Designed by Pierre Daems

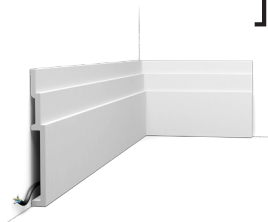


1 SX180F

SX180 | SX180F HIGH LINE
Duropolymer®
200 x 12 x 1,6 cm
Designed by Pierre Daems



SX181 HIGH LINE
Duropolymer®
200 x 20 x 2,2 cm
Designed by Pierre Daems

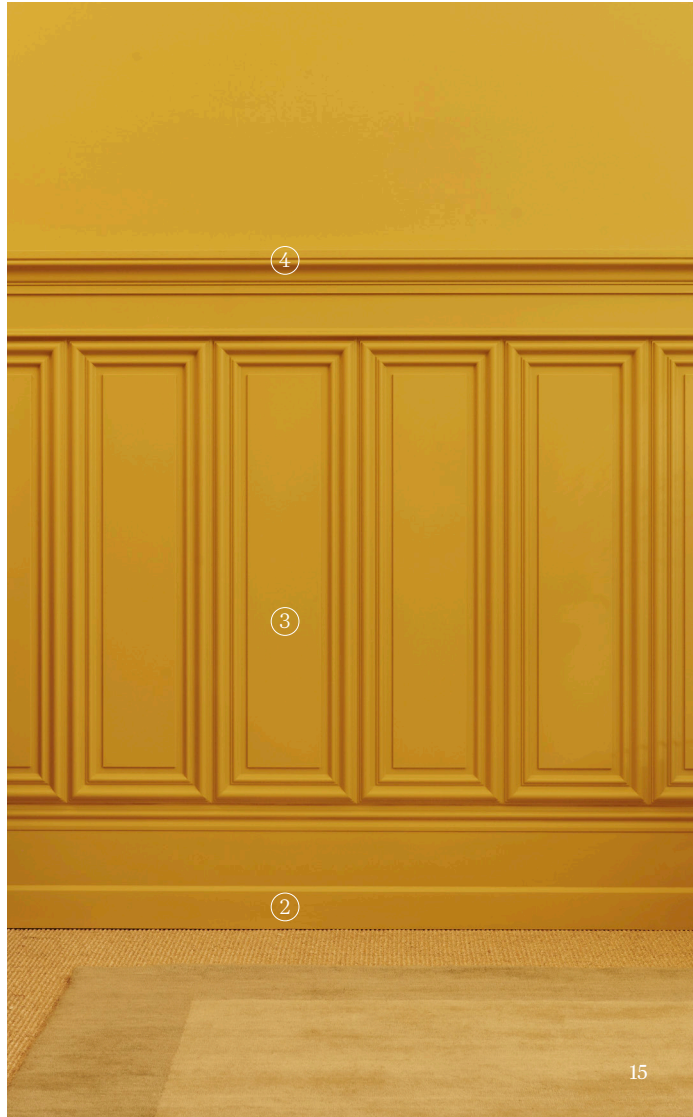


SX191 HIGH RISE
Duropolymer®
200 x 21 x 2,1 cm



High rise

2. SX191 3. W124 4. P4000



Autoire

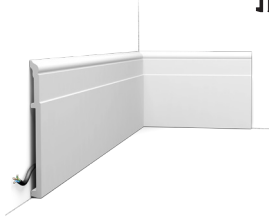
SX193 AUTOIRE
Duropolymer®
200 x 25 x 2,2 cm
Designed by Orio Tonini



1- SX193 2- W121 3- P4025 4- W120 5- C324 6- C336



SX156 HIGH HEELS
Duropolymer®
200 x 20,2 x 1,6 cm
Designed by Xavier Donck



High heels

7. SX156 8. P9020



U-steps

PX198 | PX198F U-STEPS
Duropolymer®
200 x 8,3 x 2 cm
Designed by Orio Tonini



1. PX198 2. CX190 3. W115 4. CX196



PX198 | PX198F U-STEPS
Duropolymer®
200 x 8,3 x 2 cm
Designed by Orio Tonini



SX105 | SX105F
Duropolymer®
200 x 11 x 1,3 cm



5. SX105 6. P7070



Applications

① Flexible

Flexibel | Flexible | Flexibel | Flexible



①

② Multifunctional

Multifunctioneel | Multifonction |
Multifunktional | Multifuncional

③ Combine & elevate

Combineer & verfijn | Combinez &
sublimez | Kombinieren & aufwerten |
Combina y eleva

④ Cover skirting

Overzetplinten | Recouvre les plinthes |
Abdecksockelleisten | Cubre el rodapié



④

⑤ Hides cables

Verbergt kabels | Dissimule les câbles |
Versteckt Kabel | Oculta cables

⑥ Indirect lighting

Indirecte verlichting | Éclairage indirect
| Indirekte Beleuchtung | Iluminación
indirecta



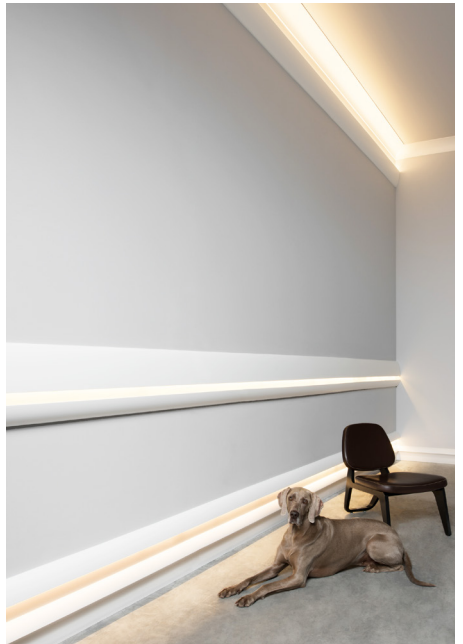
②



③



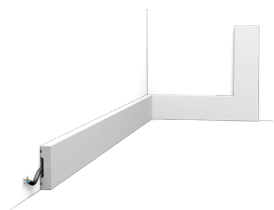
⑤



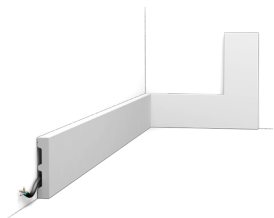
⑥

Finishing with RAL9003

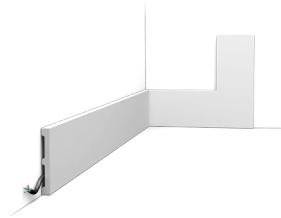
**SX162 | SX162F |
SX162-RAL9003 SQUARE**
Duropolymer®
200 x 4 x 1 cm



**SX157 | SX157F |
SX157-RAL9003 SQUARE**
Duropolymer®
200 x 6,5 x 1,3 cm



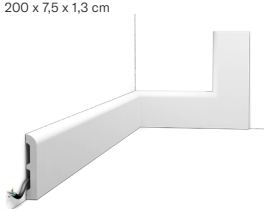
**SX163 | SX163F |
SX163-RAL9003 SQUARE**
Duropolymer®
200 x 10,1 x 1,3 cm



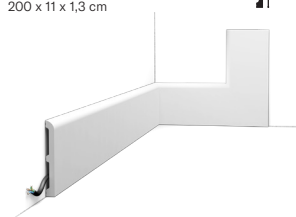
SX171 | SX171-RAL9003 SQUARE
Duropolymer®
200 x 10 x 2,2 cm



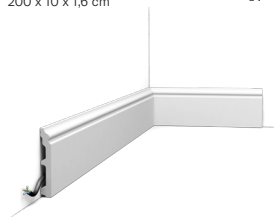
**SX183 | SX183F |
SX183-RAL9003 CASCADE**
Duropolymer®
200 x 7,5 x 1,3 cm



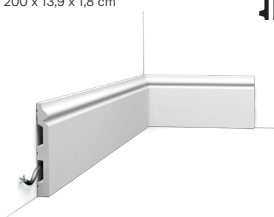
**SX184 | SX184F |
SX184-RAL9003 CASCADE**
Duropolymer®
200 x 11 x 1,3 cm



**SX173 | SX173F |
SX173-RAL9003 CONTOUR**
Duropolymer®
200 x 10 x 1,6 cm

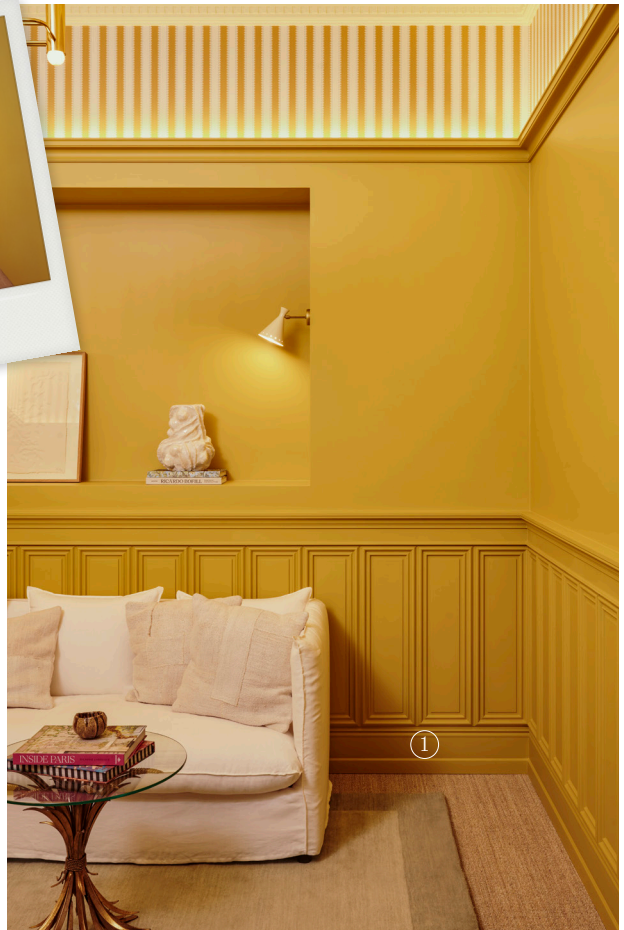


**SX118 | SX118F |
SX118-RAL9003 CONTOUR**
Duropolymer®
200 x 13,9 x 1,8 cm



Transform bare walls into eye-catching elevations.

1. SX191



NL –
Geef kale muren een
stijlvolle eyecatcher.

FR –
Transformez des murs nus
en surfaces qui attirent
tous les regards.

DE –
Verwandeln Sie schlichte
Wände in beeindruckende
Highlights.

ES –
Convierte paredes
desnudas en superficies que
captan todas las miradas.



GET INSPIRED AT WWW.ORACDECOR.COM

Sustainability



Our skirtings are 100% recyclable and contain up to 50% post-industrial and post-consumer plastic waste. We are committed to increasing the amount of recycled content by 2035.



NL –

Onze plinten zijn 100% recycleerbaar en bevatten tot 50% gerecycled materiaal (post-industrial en post-consumer). Tegen 2035 willen we dit aandeel nog verder verhogen.

FR –

Nos plinthes sont 100 % recyclables et contiennent jusqu'à 50 % de déchets plastiques post-industriels et post-consommation. Nous nous engageons à augmenter la part de contenu recyclé d'ici 2035.

DE –

Unsere Sockelleisten sind zu 100 % recycelbar und enthalten bis zu 50 % postindustrielle und postkonsumierte Kunststoffabfällen. Bis 2035 wollen wir den Anteil an recyceltem Material stetig erhöhen.

ES –







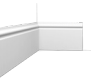



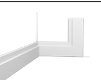
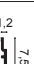











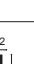

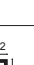


Nuestros rodapiés son 100 % reciclables y contienen hasta un 50 % de residuos plásticos postindustriales y posconsumo. Nuestro objetivo es aumentar la proporción de materiales reciclados para 2035.



READ THE SUSTAINABILITY REPORT

Overview

SX194 SX194F Duropolymer® 200 x 2 x 1 cm	SQUARE			p.8
SX162 SX162F Duropolymer® 200 x 4 x 1 cm	SQUARE			p.8
SX157 SX157F Duropolymer® 200 x 6,5 x 1,3 cm	SQUARE			p.8
SX163 SX163F Duropolymer® 200 x 10,1 x 1,3 cm	SQUARE			p.8
SX168 Duropolymer® 200 x 15 x 1,3 cm	SQUARE			p.8
SX207 SX207F Duropolymer® 200 x 25 x 1,3 cm	SQUARE			p.8
SX171 SX171-RAL9003 Duropolymer® 200 x 10 x 2,2 cm	SQUARE			p.8
SX182 SX182F Duropolymer® 200 x 5 x 1,3 cm	CASCADE			p.10
SX183 SX183F Duropolymer® 200 x 7,5 x 1,3 cm	CASCADE			p.10
SX184 SX184F Duropolymer® 200 x 11 x 1,3 cm	CASCADE			p.10
SX212 Duropolymer® 200 x 17 x 1,3 cm	CASCADE			p.10
SX185 Duropolymer® 200 x 12 x 2,5 cm	CASCADE			p.10

SX165 SX165F Duropolymer® 200 x 6,9 x 1,1 cm	CONTOUR			p.12
SX173 SX173F SX173-RAL9003 Duropolymer® 200 x 10 x 1,6 cm	CONTOUR			p.12
SX118 SX118F SX118-RAL9003 Duropolymer® 200 x 13,9 x 1,8 cm	CONTOUR			p.12
SX206 Duropolymer® 200 x 18 x 1,8 cm	CONTOUR			p.12
SX186 Duropolymer® 200 x 13,8 x 2,2 cm	CONTOUR			p.12
SX187 SX187F Duropolymer® 200 x 7,5 x 1,2 cm <i>Designed by Pierre Daems</i>	HIGH LINE			p.14
SX180 SX180F Duropolymer® 200 x 12 x 1,6 cm <i>Designed by Pierre Daems</i>	HIGH LINE			p.14
SX181 Duropolymer® 200 x 20 x 2,2 cm <i>Designed by Pierre Daems</i>	HIGH LINE			p.14
SX191 HIGH RISE Duropolymer® 200 x 21 x 2,1 cm	HIGH RISE			p.15
SX193 Duropolymer® 200 x 25 x 2,2 cm <i>Designed by Orio Tonini</i>	AUTOIRE			p.16
SX156 Duropolymer® 200 x 20,2 x 1,6 cm <i>Designed by Xavier Donck</i>	HIGH HEELS			p.17
PX198 PX198F Duropolymer® 200 x 8,3 x 2 cm <i>Designed by Orio Tonini</i>	U-STEPS			p.18
PX198 PX198F Duropolymer® 200 x 8,3 x 2 cm <i>Designed by Orio Tonini</i>	U-STEPS			p.18
SX105 SX105F Duropolymer® 200 x 11 x 1,3 cm				p.19

Surface & atmosphere

OMGEVING & ONDERGROND
 ENVIRONNEMENT & SURFACE
 UMGEBUNG & UNTERGRUND
 AMBIENTE & SUPERFICIE

Ready?



Storage and installation conditions: Store profiles and adhesives at room temperature and wait 24 hours before installing.

NL –
 Opslag- en plaatsingsvoorwaarden:
 Plaats profielen en lijmen 24 uur vóór
 de installatie op kamertemperatuur.

FR –
 Conditions d'installation et de stockage:
 Stockez les profils et les colles à température
 ambiante 24 heures avant la pose.

DE –
 Lager- und Installationsbedingungen:
 Profile und Kleber 24 Stunden vor
 Verlegung bei Zimmertemperatur lagern.

ES –
 Condiciones de almacenamiento y
 de instalación: Colocar los productos
 y adhesivos a temperatura ambiente
 24 horas antes de la instalación.



Dust free
 Stofvrij
 Sans poussière
 Staubfrei
 Libre de polvo



Sand and wash surface
 Schuur en reinig de ondergrond
 Poncez et nettoyez la surface
 Schleifen und reinigen Sie den Untergrund
 Superficie lisa y limpia



Flat wall & ceilings
 Vlakke wand en plafond
 Mur et plafond plats
 Glatte Wand und Decke
 Paredes y techos lisos



Dry
 Droog
 Sec
 Trocken
 Seco



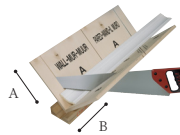
No grease
 Vetvrij
 Sans graisse
 Fettfrei
 Sin grasa

Tools

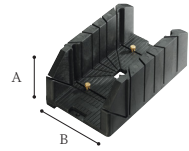
TOEBEHOREN
 ACCESSOIRES
 ZUBEHÖR
 ACCESORIOS



FB15



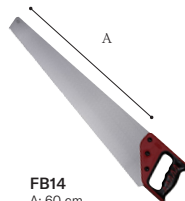
FB300
 A: 29,7 cm | B: 29,1cm



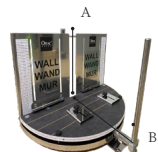
FB13
 A: 12,5 cm | B: 15,5 cm



A38



FB14
 A: 60 cm



FB10
 A: 27,5 cm | B: 22 cm

Decofix adhesives

DECOFIX LIJMEN
COLLES DECOFIX
DECOFIX KLEBER
DECOFIX ADHESIVOS



ONLINE GLUE
CALCULATOR

Set?



Porous and dry surface
Poreuze en droge ondergronden
Surfaces poreuses, pièces non humides
Poröser/ saugfähiger und trockener Untergrund
Superficies porosas y secas



Heavy profiles
Zware lijsten
Profils lourds
Schwere Profile
Perfiles Pesados



Non-porous and humid surfaces and 3D Wall Covering
Niet-poreuze en vochtige ondergronden en 3D wandbekleding — Surfaces non poreuses, environnement humide et revêtements muraux 3D — Nicht-poröser/saugfähiger Untergrund und Feuchträume — Superficies no porosas, ambientes húmedos y paneles 3D



Seal wall/ceiling
Verbinding muur/plafond
Collage mur/plafond
Verbindung Wand/Decke
Adherencia techos/paredes



DecoFix Pro

Strong, water-based acrylic installation adhesive

FDP500 310ml | 7 > 8m



DecoFix Power

Very strong MS-Polymer-based installation adhesive

FDP700 290ml | 7 > 8m



Joints between mouldings*
Verbinding tussen profielen
Joints entre les profils
Nahtverbindungen zwischen Profilen
Uniones entre los perfiles



DecoFix Ultra

Polymer-based adhesive

FX400 270ml | min. 80m



DecoFix Ultra

Polymer-based adhesive

FX400 270ml | min. 80m



Filler & finishing
Vullen en afwerking
Enduit et finition
Verfugen und Endbearbeitung
Relleno y acabado



DecoFiller

Acrylic filler

FL300 310ml | > 30m



DecoFiller

Acrylic filler

FL300 310ml | > 30m



Go! Installation videos & manuals

VISIT WWW.ORACDECOR.COM/INSTALLATION OR SCAN THE QR CODE



ORAC Headquarters | nv Orac sa

Biekorfstraat 32
8400 Ostend, Belgium
T +32 59 80 32 52
info@oracdecor.com

ORAC Benelux

Biekorfstraat 32
8400 Ostend, Belgium
NL: T +31 852 08 40 59
BeLux: T +32 59 79 02 82
benelux@oracdecor.com

ORAC Bulgaria

T +40 (31) 630 06 19
bulgaria@oracdecor.com

ORAC Deutschland

Boltensternstraße 159A
50735 Köln, Deutschland
T +49 221 747 499 39
deutschland@oracdecor.com

ORAC España

C/ del Rosselló, 229
08008 Barcelona, España
T +34 938 56 49 00
spain@oracdecor.com

ORAC Estonia

T +372 58 55 8668
eesti@oracdecor.com

ORAC Export

T +32 59 79 02 83
export.cs@oracdecor.com

ORAC France

13 Rue Séguier
75006 Paris, France
T +33 188803631
france@oracdecor.com

ORAC Ireland

T +35 381 8000 280
ireland@oracdecor.com

ORAC Italia srl

Corso Giacomo Matteotti, 5/H
23900 Lecco (LC), Italia
T +39 0341 362062
italia@oracdecor.com

ORAC Latvija

T +371 264 888 31
latvija@oracdecor.com

ORAC Lietuva

T +370 6999 0006
lietuva@oracdecor.com

ORAC Österreich

T +43 662 23 49 27
oesterreich@oracdecor.com

ORAC Polska

ul. Pomorska 106A
91-402 Łódź, Polska
T +48 42 203 60 56
polska@oracdecor.com

ORAC Romania

Blvd. I.C. Bratianu nr. 10, floor 1, district 3
Bucharest, cod 030174, Romania
T +40 31 630 06 19
romania@oracdecor.com

ORAC Schweiz

T 0800 562 118
switzerland@oracdecor.com

ORAC Slovakia s.r.o.

Kpt. Nalepku 6
08271 Lipany, Slovakia
T +421 232 784 952
slovakia@oracdecor.com

ORAC UK Ltd.

The Courtyard
30 Worthing Road
Horsham RH12 1SL
T +44 1403 240 102
uk@oracdecor.com

Unexpected possibilities.